

# SP SERIES

Ultra-high performance and maximum flexibility



SP40, SP40H  
without viewfinder

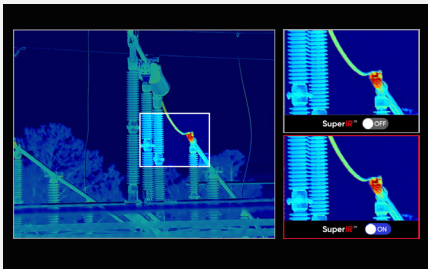


VISIT OUR WEBSITE

## SuperIR™

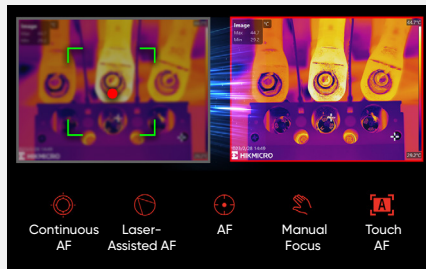
Powered by HIKMICRO SuperIR image enhancement technology, it upscales thermal images resolution when recording video with 30 Hz fast image frequency and capturing photos.

- SP40/H: from 480 × 360 up to 960 × 720
- SP60/H: from 640 × 480 up to 1280 × 960
- SP120H: from 1280 × 1024 up to 2560 × 2048



## One-second fast focusing

Support for **5 focus modes** (Laser-Assisted AF, Continuous AF, AF, Manual Focus, Touch AF) with a fast focus speed of **1 second** to match your workflow, optimize image clarity, and ensure measurement accuracy.



## Flexible Rotating Lens and Screen

The 90° rotating screen and the 180° rotating lens design help to easily view the area around, between, above, or below the target. Keeping a safe distance allows for equally flexible inspections.



Up to 2200°C  
Temperature Range



1-Tap Level & Span



Extensive Range of  
Interchangeable Lenses



Embedded  
Laser Distance Meter

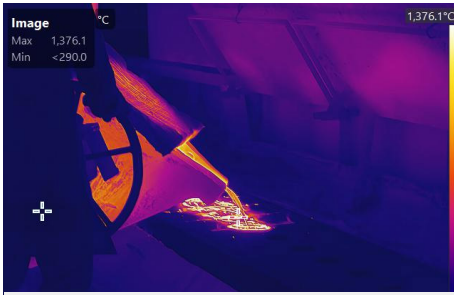


Radiometric Video Analysis

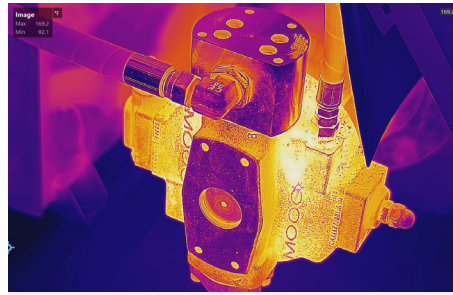


Interchangeable Battery  
System

## APPLICATIONS



High temperature



Industrial



Power Industry

## WHAT'S IN THE BOX



- Thermal Imager
- Hand Strap
- Neck Strap
- Rubber Viewfinder Cap (SP60/60H/120H Only)
- Camera Lens Caps
- Dismountable and Rechargeable Li-ion Batteries (x2)
- Power Supply for Battery Charger
- Two-bay Battery Charger
- International Use Plugs (US/EU/UK/AU) for Power Supply
- USB 2.0 A to USB Type-C Cable
- Mini HDMI to HDMI Cable
- USB Type-C Cable to USB Type-C Cable
- Hard Carrying Case
- Calibration Certificate
- Quick Start Guide
- 128GB Micro SD card
- Dust-free Cloth

## OPTIONAL ACCESSORIES



HM-SP630-LENS



HM-SP620-LENS



Tripod Adapter



HM-SP650-MACRO



HM-SP610-LENS



SP Series Pouch



HM-SP605-LENS



HM-SP620-MACRO

Model No		SP40	SP40H	SP60	SP60H	SP120H	
Infrared Image	IR Resolution	480 x 360	480 x 360	640 x 480	640 x 480	1280 x 1024	
	SuperIR	960 x 720	960 x 720	1280 x 960	1280 x 960	2560 x 2048	
	NETD	< 30 mK (@ 30 °C, F#=1.0)				< 20mK (@ 30 °C, F#=1.0)	
	Image Frequency	30 Hz					
	Field of View (FOV)	L6: 6° x 4.5°; L9: 9° x 6.8°; L19: 18.7° x 14°; L37: 37.3° x 27.8°			L8: 8° x 6°; L12: 12° x 9°; L25: 24.8° x 18.7°; L50: 50° x 37.3°		L8: 7.9° x 6.3°; L12: 12° x 9.6°; L25: 25° x 20°; L50: 50° x 40°
	Spatial Resolution (IFOV)	L6: 0.22 mrad; L9: 0.33 mrad; L19: 0.68 mrad; L37: 1.35 mrad			L8: 0.22 mrad; L12: 0.33 mrad; L25: 0.68 mrad; L50: 1.35 mrad		L8: 0.11 mrad, L12: 0.17 mrad, L25: 0.34 mrad, L50: 0.68 mrad
Focus Speed	Approx. 1 second						
Image Display	Visual Camera	3264 x 2448 (8 MP)				4208 x 3120 (13 MP)	
Display		1280 x 720 Resolution, 5" LCD Touch Screen				1920 x 1080 Resolution, 5.1" OLED Touch Screen	
Measurement and Analysis	Object Temperature Range	-20 °C to 650 °C (-4 °F to 1202 °F)	-40°C to 2200°C (-4°F to 3992°F)	-20 °C to 650 °C (-4 °F to 1202 °F)	-40°C to 2200°C (-4°F to 3992°F)	-40°C to 2200°C (-40°F to 3992°F)	
	Accuracy	±2°C/3.6°F	±1°C /±1.8°F	±2°C/3.6°F	±1°C /±1.8°F	± 2°C/3.6°F	
General	Image and Video Formats	Radiometric JPEG, MP4 Video, Radiometric Video					
	Wi-Fi	802.11 b/g/n (2.4 GHz and 5 GHz)					
	HDMI Interface	Yes					
	GPS & Compass	Yes					
	Battery Operating Time	Approx. 4 hours					

### DISTRAME

Parc du Grand Troyes - 40 rue de Vienne - 10300 SAINTE-SAVINE  
Tél. : 03 25 71 25 83 - [infos@distrame.fr](mailto:infos@distrame.fr) - [www.distrame.fr](http://www.distrame.fr)

